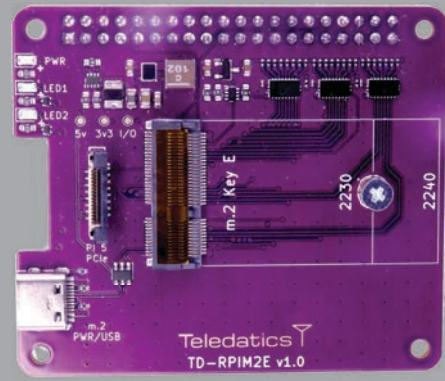


TD-RPIM2E

Raspberry Pi m.2 Carrier



TD-RPIM2E: Universal m.2 Key E & A+E RF Card Carrier for Raspberry Pi

The TD-RPIM2E is a versatile m.2 card carrier designed to expand the connectivity options of Raspberry Pi models 3, 4, and 5.

This cutting-edge carrier board supports multiple interfaces, making it the ideal solution for developers seeking to integrate advanced RF modules and other peripherals into their Raspberry Pi projects.

Description

With level shifting from the m.2 Key E 1.8V I/O to the Raspberry Pi's 3.3V I/O, the TD-RPIM2E ensures seamless communication across a range of interfaces such as I2C, UART, SPI, SDIO, PCM, and USB.

The board also supports PCIe pins on the Raspberry Pi 5 through a ZIF connector and uses the same PCIe cable as common model 5 accessories.

Features

Universal Compatibility

Supports m.2 Key E and Key A+E RF cards.

Multiple Interfaces

Offers I2C, UART, SPI, SDIO, PCM, and USB connectivity for maximum flexibility.RF cards.

Level Shifting

1.8V m.2 Key E I/O shifted to Raspberry Pi's 3.3V I/O.

Raspberry Pi Compatibility

Works with Raspberry Pi models 3, 4, and 5.

PCIe Support for Raspberry Pi 5

Includes a ZIF connector to access PCIe pins on the Raspberry Pi 5

Plug & Play Expansion

Easy integration for adding wireless, RF, or other modules to Raspberry Pi setups.

Specifications

Name	TD-RPIM2E
Compatible	Raspberry Pi
Model	3, 4, or 5
Interfaces	USB I2C UART SDIO SPI PCM GPIO PCIe
m.2 Standard	Key E and A+E
Size	22 mm x 30 mm 22 mm x 40 mm
Operating Voltage	5v
Compatibility	HaloMax™ and LoraMax™ cards Any m.2 compliant RF card

